

**Registered Office:**

Shree Krishna Construction  
Sanjeevani Apartment  
S. F. Road, Siliguri

**Site Address:**

Beside Mansarovar Complex, Pranami Mandir Road  
Sevoke Road, Siliguri, West Bengal 734 001  
M: +91 94340 61711 / +91 98320 92996

**HIRA No.:**

**Disclaimer:**

This brochure contains concept drawings which may undergo sanction changes at the discretion of the developer.  
The area charts and the accompanying brochure are not a legal tender or an offer document.

Concept & Design by: [BetheBee.in](http://BetheBee.in)



# KRISHNA HEIGHTS

Unveiling  
A Work of Art







**Destined to you,  
defined by your taste**

Your taste deserves a place of its own. Where experience of living gets better every day. Where elegance resides with élan and grace rules the space.





# KRISHNA HEIGHTS

Siliguri's Pride  
Possessed by a few



Krishna Heights offers you a world of poise.  
It's more than a residence.  
A world-class living space with the finest  
architecture and superlative amenities.

- 2 Elegant Towers (Brij & Gokul)
- G + 7
- 3 & 4 BHK Apartments
- 35 Prime Residences
- 4 Commercial Units





elevation



Artist's Impression





••••

# An epitome of luxury surrounded by greens

Find your kind of living in Krishna Heights.  
It will soothe your taste.



Artist's Impression

bird's eye view





## Near the heart of the city Far from maddening crowd

Located on the famous Pranami Mandir Road, it offers excellent connectivity and locational advantages with respect to the main city.



- 1.3 km** Anandaloke Multispeciality Hospital
- 1.7 km** Vishal Cinema Hall
- 2.5 km** Cosmos Mall
- 6 km** NJP Railway Station
- 17 km** Bagdogra Airport





## Finest amenities Featured aesthetics

Be it an avant-garde community hall, be it a lavish swimming pool, be it a designer landscaped garden, nothing has been left to chance while designing the amenities for Krishna Heights.

- Swimming Pool
- Community Hall
- Landscaped Garden
- Yoga Zone







Artist's Impression





## High-standard facilities Upgraded to next level

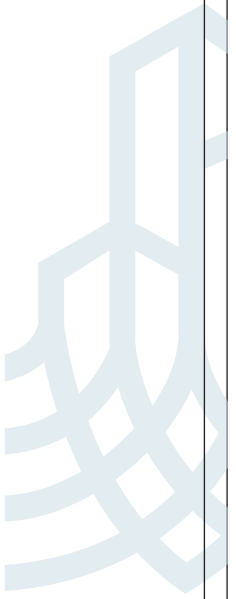


- High-speed Elevator
- Designated Parking
- 24x7 Security and Surveillance
- 24x7 Power Backup
- 24x7 Running Water
- High-end Firefighting Facility
- CCTV Camera



## Remastering the landscape • • Redefining luxury

Being jointly ventured by the eminent businessmen of Siliguri, who are constantly driven by the belief that excellence must be a continuous process, Krishna Heights uplifts the living by offering a lifestyle that everyone wishes for. Having delivered various residential & commercial spaces, infrastructural wonders, hotels and warehousing projects, these renowned and trusted entrepreneurs are committed to creating new skyline over the city of Siliguri by building more residential as well as commercial wonders in upcoming years.







# Ground Floor Plan



SHOP	SBUA (Sq. Ft.)	RERA Carpet (Sq. Ft.)
SHOP - 1	1343	1000
SHOP - 2	1412	1053
SHOP - 3	951	712
SHOP - 4	953	698







# Typical Floor Plan





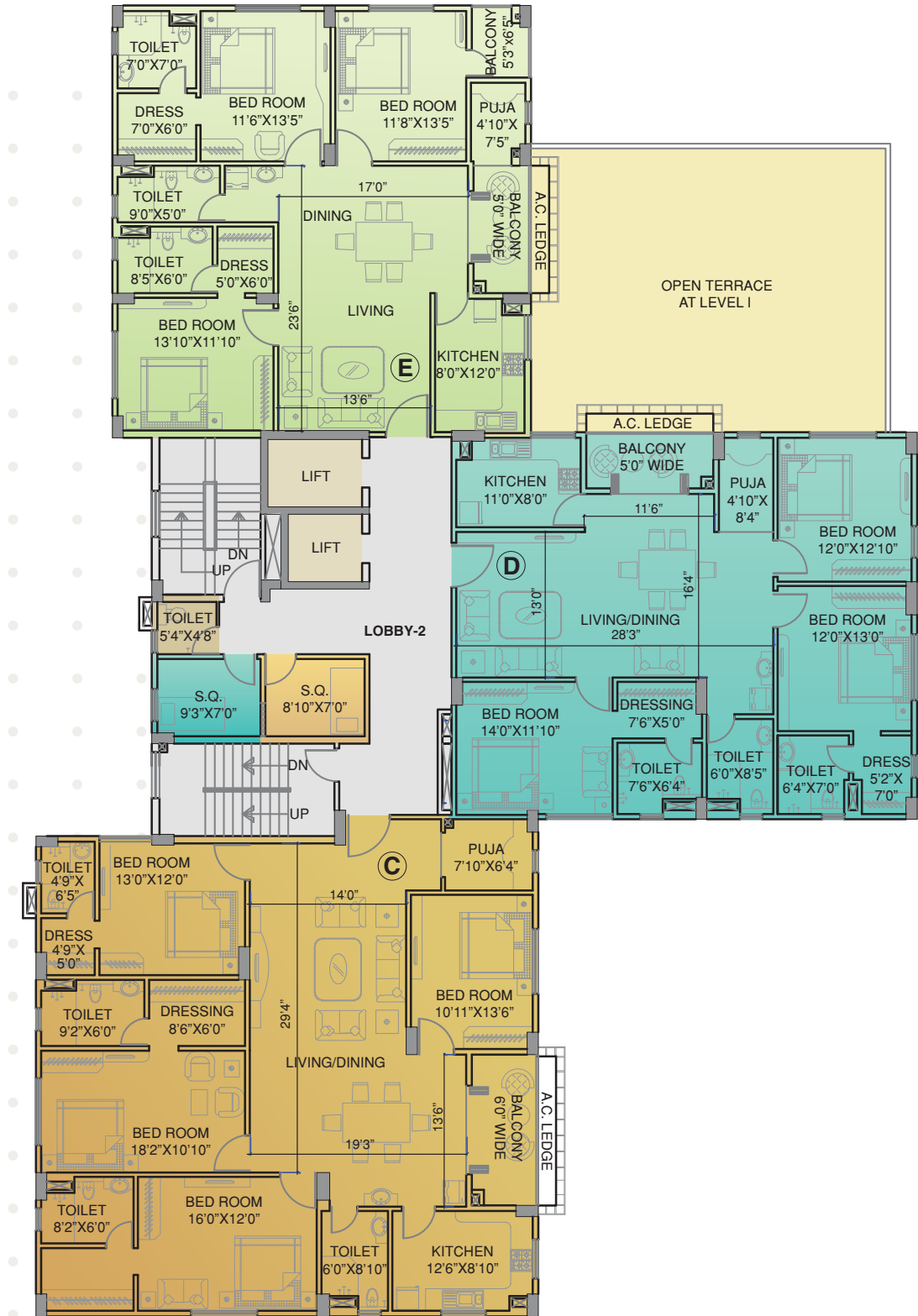


# Block – Brij 1<sup>st</sup> to 7<sup>th</sup> Floor Plan



FLAT	BUA (Sq. Ft.)	SBUA (Sq. Ft.)	RERA Carpet (Sq. Ft.)	RERA Store Carpet (Sq. Ft.)	Extra Terrace Area Sq. Ft. (1st Floor)
A	2535	3041	2007	55	1544
B	2273	2728	1781	49	227

# Block – Gokul 1<sup>st</sup> to 7<sup>th</sup> Floor Plan



FLAT	BUA (Sq. Ft.)	SBUA (Sq. Ft.)	RERA Carpet (Sq. Ft.)	RERA Store Carpet (Sq. Ft.)	Extra Terrace Area Sq. Ft. (1st Floor)
C	2300	2760	1849	67	227
D	1710	2052	1352	65	411
E	1626	1951	1352	Nil	411